

Stainless steel submersible drainage pumps for chemically aggressive liquids. Spherical clearance 50 – 70 mm.

CTP 50, CTP 53, CTP 70

Application

HOMA CTP stainless steel submersible drainage pumps are suitable for pumping corrosive, abrasive or chemically aggressive liquids, waste water or sewage and chemicals containing soft solids of 50 - 70 mm diameter. They are used in various domestic, industrial or municipal applications.

DIN EN 12050-2: Conformity and design approved and controlled by LGA

Installation: Transportable or permanent.

Pumped liquid: Drainage water or sewage containing soft solids and chemically aggressive liquids.

PH-valve 3-14. Max. liquid temperature: 40°C, short term up to 60°C. for limitation to lower temperatures see specific chemical resistance of used materials.

Operation: Permanent (S1).

Design

Fully submersible, compact integrated motor-pump unit consisting of:

Pump: Single stage centrifugal pump with horizontal discharge.

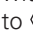
Impeller: Closed single channel impeller for liquids containing impurities and sludge with solid particles. Spherical clearance 50 and 70 mm.

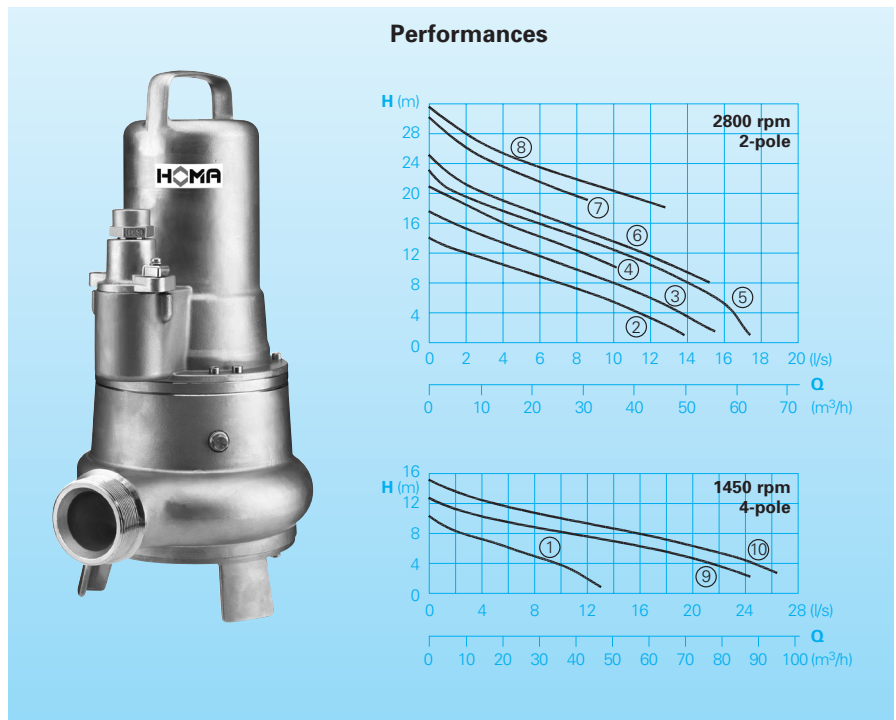
Motor: Fully submersible, pressure tight electric motor. Insulation class H. Degree of protection IP 68. Thermal sensor embedded in the winding.

Cable: H07 RN-F (Plus) 6G1,5 with cable protective hose and longitudinally tight cable trumpet.

Shaft/Bearing: Large diameter stainless steel rotor shaft, pre-lubricated bearings.

Seals: Combination of two mechanical seals (silicon-carbide/ silicon-carbide) in separate oil chamber. Oil inspection from outside.

Explosion proof: All Pump types also with explosion proof motors according to  II 2 G Ex c d II B T4(T3) available.



Technical Data

Curve No.	Pump typ	Motor Input P ₁ (kW)	Motor Output P ₂ (kW)	Speed (rpm)	Nominal current (A)	Spherical clearance (mm)	Discharge	Weight (kg)
①	CTP 50 (53) M 13/4 D (Ex)	1,3	1,0	1450	2,6	50	G 2½(3) M	39
②	CTP 50 (53) M 19/2 D (Ex)	1,9	1,5	2800	4,0	50	G 2½(3) M	39
③	CTP 50 (53) M 23/2 D (Ex)	2,3	1,8	2800	4,4	50	G 2½(3) M	39
④	CTP 50 (53) M 24/2 D (Ex)	2,4	1,9	2800	4,6	50	G 2½(3) M	39
⑤	CTP 50 (53) M 34/2 D (Ex)	3,4	2,8	2800	6,9	50	G 2½(3) M	51
⑥	CTP 50 (53) M 35/2 D (Ex)	3,5	2,8	2800	7,1	50	G 2½(3) M	51
⑦	CTP 50 (53) M 35/2 HD (Ex)	3,5	2,8	2800	7,1	50	G 2½(3) M	51
⑧	CTP 50 (53) M 50/2 D	5,2	4,4	2800	8,7	50	G 2½(3) M	62
⑨	CTP 70 M 26/4 D (Ex)	2,5	2,0	1450	5,4	70	DN 80	65
⑩	CTP 70 M 31/4 D (Ex)	3,2	2,5	1450	6,1	70	DN 80	65

Voltage: 400-415V/3Ph

Model Ex: explosion proof

Materials

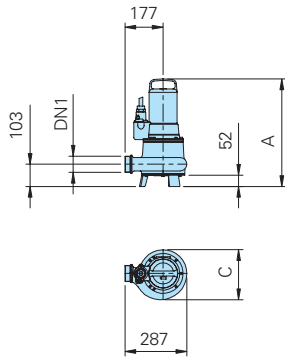
Pump housing, motor housing	Stainless steel 1.4436
Rotor shaft, wear ring mechanical connection parts	Stainless steel 1.4517
O-Rings	FPM (Viton)
Mechanical seals	SiC / SiC, FPM (Viton)
Cable protective hose	Polyolefin
Impeller CTP 50, CTP 53	Stainless steel 1.4436
Impeller CTP 70	Stainless steel 1.4517

Equipment supplied

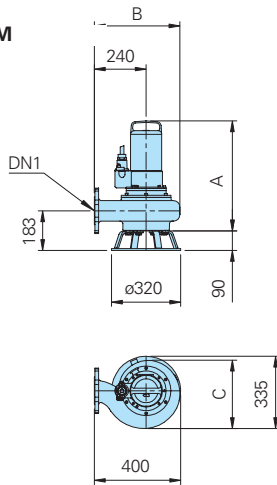
Pumps with base stand (CTP50 und CTP53). Base stand for CTP70 available as accessories. 10 m of cable, 5 m cable protective hose. Control boxes DT32; DA10/32; DA 10/12; DZ12 available as accessories.

Dimensions and Installations (all dimensions in mm)

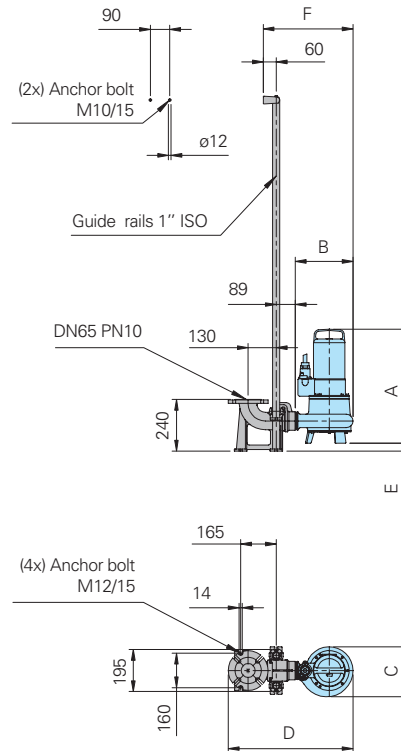
**CTP50M
CTP53M**



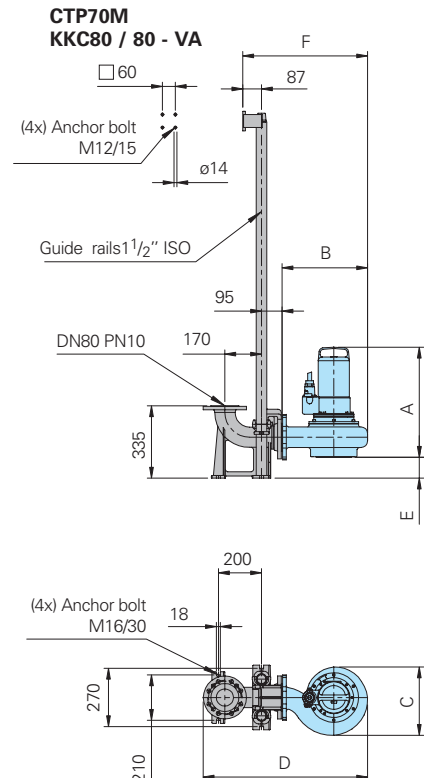
CTP70M



**CTP50M
KKC65 / R 2½" - VA**

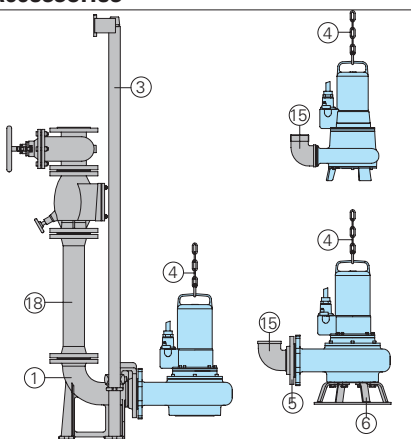


**CTP53M
KKC80 / R 3" - VA**



Pump typ	DN1	A max	B	C	D	E	F
CTP 50 M 13/4 D (Ex)	G 2½ AG	498	267	232	579	37	416
CTP 50 M (19-24)/2 D (Ex)	G 2½ AG	498	267	232	579	37	416
CTP 50 M (34-35)/2 D (Ex)	G 2½ AG	529	267	232	579	37	416
CTP 50 M 35/2 HD (Ex)	G 2½ AG	529	267	232	579	37	416
CTP 50 M 50/2 D (Ex)	G 2½ AG	567	267	232	579	37	416
CTP 53 M 13/4 D (Ex)	G 3 AG	498	291	232	656	87	473
CTP 53 M (19-24)/2 D (Ex)	G 3 AG	498	291	232	656	87	473
CTP 53 M (34-35)/2 D (Ex)	G 3 AG	529	291	232	656	87	473
CTP 53 M 35/2 HD (Ex)	G 3 AG	529	291	232	656	87	473
CTP 53 M 50/2 D	G 3 AG	567	291	232	656	87	473
CTP 70 M (26-31)/4 D (Ex)	DN80 PN10	511	397	317	762	97	579

Accessories



Part Description	Dimension	Part No.	Part Description	Dimension	Part No.
① Auto-coupling system from stainless steel 1.4436, consisting of auto coupling with flange, flange pump coupling and upper slide rail bracket			④ Pump chain sets, testet. With shackle, One- or Two-strand, different lengths and load capacities		on request
- Type KKC 65/R2½"	DN 65/BSP2½"	8604017			
- Type KKC 80/R3"	DN 80/BSP3"	8604037	⑤ Flange, stainless steel 1.4571 DN 65/R2½" IG		2215115
- Type KKC 80/80	DN 80	8604027			2215120
○ Screw-kits for installation of coupling system		on request	⑥ Base stand for CTP 70 stainless steel 1.4571		7321344
○ Slide rail fixing bracket	Ø 1" for KKC65 Ø 1½" for KKC80	7322085 7323854A	⑮ Elbow 90° stainless steel 1.4401	BSP2½" F/M BSP3" F/M	2111826 2111827
③ Guide rails, stainless steel 1.4571 pair, per m	dia.1" for KKC65 dia.1½" for KKC80	2190252 2190254	⑱ Stainless steel or plastic dischargepipe and fitting		on request
			○ Pump controls and control panels for permanent or transportable installation, level controllers and monitoring devices		see HOMA-accessories



HOMA Pumpenfabrik GmbH
 P.O.Box 22 63, D-53814 Neunk.-Seelscheid
 Tel. +49 (0) 22 47/702-0, Fax +49 (0) 22 47/702-44
 e-mail: info@homa-pumpen.de
 www.homapumps.com